

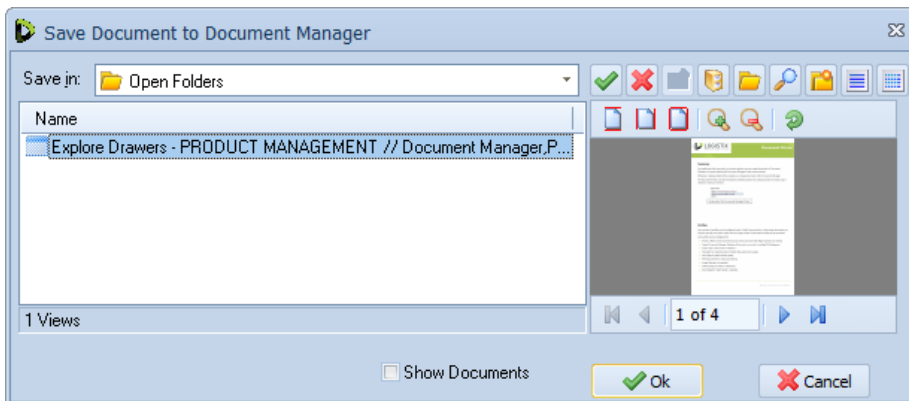
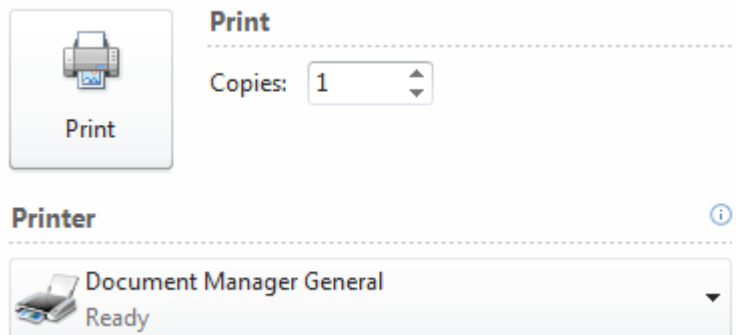
## Summary

Any application that can print to a windows printer can now create documents in Document Manager by simply selecting the Document Manager Printer when printing.

Whatever is being printed will be created as an image document within Document Manager.

The Document Printer can also forward the printed document to a physical printer if a hard copy is desired as well as an Archive.

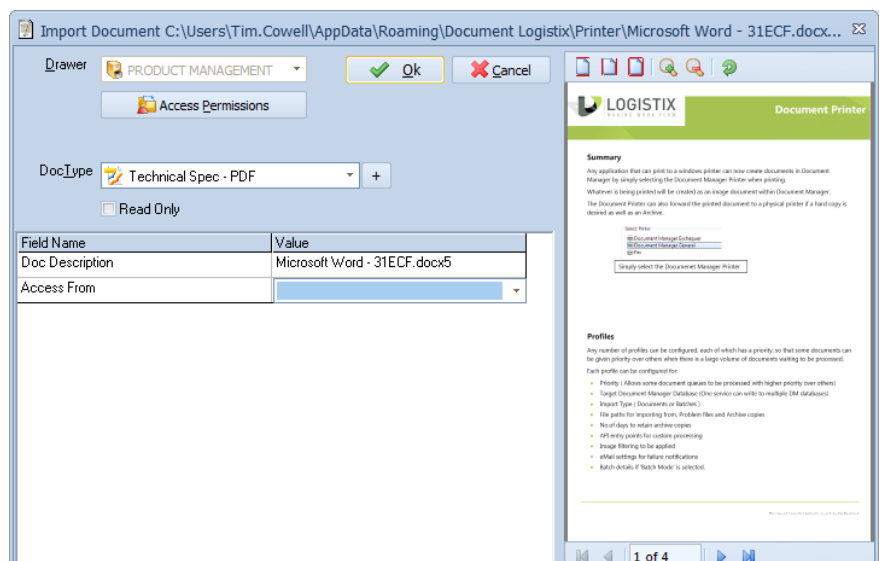
Simply select the Document Manager Printer and click Print



The Document Manager folder selection dialog will pop-up

Select the Document Type and defined the document Indexes.

That is it, the document is saved.



## Auto Indexing

Custom plugins can be created to automatically file documents without having to manually enter the index information for certain applications. For example, when printing an Invoice from an Accounting package the invoice can automatically be filed by Customer Name, Invoice number etc.... without any user intervention required. Please contact Document Logistix with specific requirements.

## FAQs

### How is the printer licensed?

There is a one off license fee per system (regardless of the number of users), please consult your DM reseller for details.

### Can Colour or Black and White Documents be produced?

Yes, you can configure the printer to produce either colour or monochrome images.

### Does the Printer work in a Terminal Services Environment?

Yes

### Can custom logic be applied?

Yes, there are API hooks that allow pre and post processing of the index data, to allow (for example) Database Lookups to be applied to add additional indexing information. This will require some development work by your system integrator.

## System Requirements

- Document Manager Enterprise edition 2.6 or later.
- Microsoft Windows OS ( XP, Vista, Windows7, Server 2003 or Server 2008 )(32 or 64 bit)
  - Not currently supported on Windows 8 – contact support for current status.